

BR30 9.5W DIM. TITANIUM CRI^{SP} LED SERIES



CRI^{SP}

9.5W REPLACES



**65W
Inc.**

80% Energy Savings

\$193 Savings
per lamp*

- ⌚ Revolutionary CLOUD design
- ⌚ 60% lighter due to environmentally friendly construction
- ⌚ Exceptional color rendering CRI 90
- ⌚ Richer reds and natural skin tones (R9 49, R13 94)
- ⌚ Tight LED binning for consistent CCT across all lamps
- ⌚ Suitable for use in totally enclosed fixtures



LM 79

LM 80

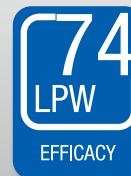
TM 21



25,000 H



DIMMABLE



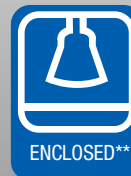
EFFICACY



WARRANTY



CRI (Ra)



ENCLOSED**

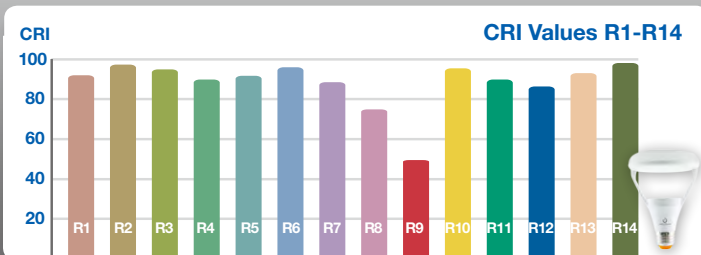
BR PRODUCT FEATURES

Revolutionary CLOUD Design

The BR30 CLOUD features an innovative design that provides more efficient light output than previous generations while using 35% less material. This environmentally friendly lamp weighs less than 100g and maintains a traditional incandescent form factor, making it suitable for all applications.



CRI & CA Quality Specification



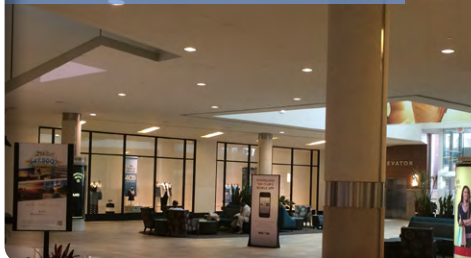
THE CRI^{SP} SERIES BR30 11W lamp features a typical CRI 90, R9 49 and R13 94, providing crisp and vibrant colors across the whole spectrum. Its exceptional R9-R14 values (R9 & R13) provide redder reds, natural looking skin tones and whiter whites.

BR30 9.5W DIM. TITANIUM CRI^{SP} LED SERIES



APPLICATIONS

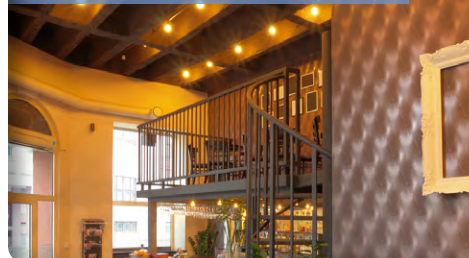
General Lighting



Recessed Lighting



Accent Lighting



SPECIFICATIONS

Product Model	58048 9.5BR30DIM/927
Type	BR30
Base	E26
Power (W)	9.5
Voltage - Frequency	120V 60Hz
Color Temp. (ANSI)	Soft White 2700K
CRI (Ra)	90
R9 / R13 (typ.)	49 / 94
Typical lumens (lm)	700
Efficacy (LPW)	74
Beam Angle	110°
Dimmable	Yes***
Power Factor	0.9
Rated Lifetime - L70 (hrs.)	25,000
Dia. x MOL	3.74"x5.20" (95x132mm)
Weight (lb. / g)	0.23lb. / 103g

* Savings per lamp based on \$0.11 / kw energy cost, 12 hrs / day lamp usage, \$4 incandescent with 1000-hr lifetime, \$25 LED with 25,000-hr lifetime

** Suitable for use in totally enclosed fixtures

*** List of tested dimmer switches available on website

**** Suitable for damp locations. Not for use where directly exposed to weather or water

Ref.# DS173-BR30-9.5W-230517