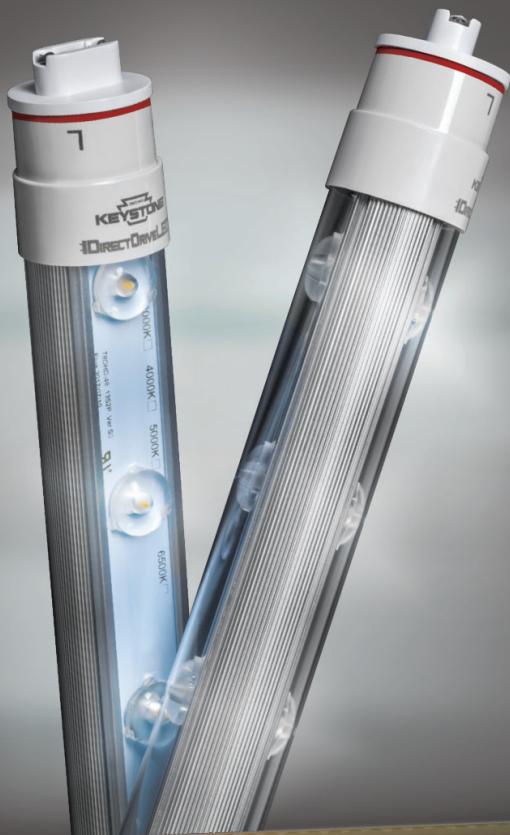


# ***SIGN HERO***

## 360° LED SIGN TUBE



SINCE 1945  
**KEYSTONE**  
LIGHT MADE EASY

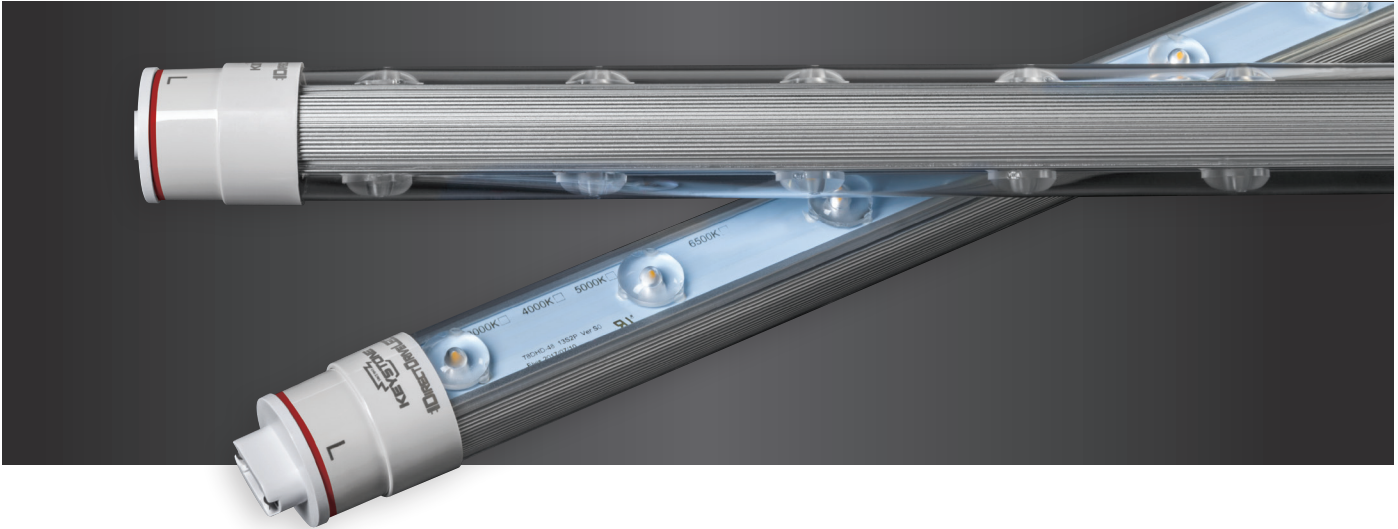
The fastest way  
to upgrade a sign  
to LED

***SIGN HERO*** | 360°  
LED SIGN TUBE

NOV 2017

# SIGN HERO

# 360° LED SIGN TUBE



## Introducing Keystone's 360° LED Sign Tube: The easiest LED installation

A perfect solution for retrofits or new sign installations, as well as single or double sided sign needs. With revolutionary DirectDrive technology there's no need for an external driver or ballast, saving precious labor time and costs. Maintenance professionals install the 360° LED Sign Tube in five minutes or less!

## Why your customers will love it

### Quick and easy installation

Our DirectDrive technology eliminates the need for an external driver or ballast while still using the existing sockets. This saves time and hassle for field technicians.

### Consistent lighting

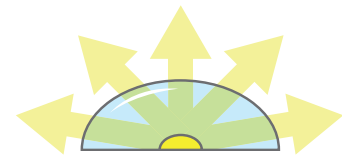
We've added optical lenses to cover each individual LED chip in the tube, which eliminates hot spots and ensures consistent light distribution across both faces of the sign.

### Flexible for your needs

We've provided a rotatable R17D end cap that swivels, ensuring that the tube can be adjusted to provide a light beam in any direction.

### Built to last

Count on Keystone for a tube with a 50,000 hour lifetime and a 5 year warranty. Heavy duty aluminum heatsink ensures LEDs run cooler for longer. Plastic and aluminum construction ensures less breakage.



Wide light distribution = No shadowing  
No hotspots



ROTATABLE  
**R17D**

## ENERGY SAVINGS\*

**540W**  
(6) F96T12HO

**VS**

**252W**  
(6) SIGN HERO LED

\*Standard 6 lamp, 8' sign with magnetic ballast

# Bypass the ballast and install in five minutes or less



## STEP 1

Turn off the power at the breaker and remove the existing fluorescent lamps.

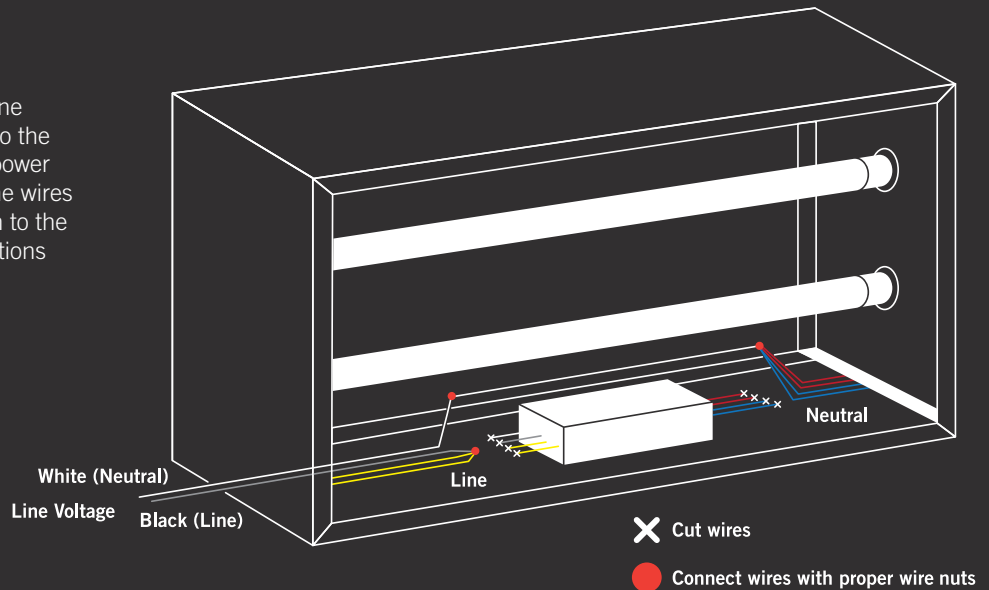


## STEP 2

Expose the sign raceway to access the wiring. Then cut input and output wires from the ballast.

## STEP 3

Take the wires coming from one side of the sign and connect to the line wire coming in from the power source. Then connect all of the wires from the other side of the sign to the neutral wire. Make all connections with proper wire nuts.



## STEP 4

Replace the raceway covers and install the LED lamps. Restore power to the fixture and confirm everything is working properly.

For installation video visit [keystonetech.com/video](http://keystonetech.com/video)



## Available for all size sign cabinets

The 360° LED Sign Tube is available in all of the lamp lengths typically used to replace T8HO & T12HO fluorescent lamps, including:



### PRODUCT SPECIFICATIONS

Catalog Number	Nominal Length	CRI	Wattage	Color Temp	Socket Type	Total Lumens	Efficacy	Lumens Per Side	Lumens per Ft, per side
KT-LED7T8-18P2S-840-D	18"	>80	7	4000K	R17d	865	124	433	288
KT-LED7T8-18P2S-865-D	18"	>80	7	6500K	R17d	900	129	450	300
KT-LED10T8-24P2S-840-D	24"	>80	10	4000K	R17d	1150	115	575	288
KT-LED10T8-24P2S-865-D	24"	>80	10	6500K	R17d	1200	120	600	300
KT-LED13T8-30P2S-840-D	30"	>80	13	4000K	R17d	1540	118	770	308
KT-LED13T8-30P2S-865-D	30"	>80	13	6500K	R17d	1600	123	800	320
KT-LED16T8-36P2S-840-D	36"	>80	16	4000K	R17d	1920	120	960	320
KT-LED16T8-36P2S-865-D	36"	>80	16	6500K	R17d	2000	125	1000	333
KT-LED18T8-42P2S-840-D	42"	>80	18	4000K	R17d	2160	120	1080	309
KT-LED18T8-42P2S-865-D	42"	>80	18	6500K	R17d	2250	125	1125	321
KT-LED21T8-48P2S-840-D	48"	>80	21	4000K	R17d	2500	119	1250	313
KT-LED21T8-48P2S-865-D	48"	>80	21	6500K	R17d	2600	124	1300	325
KT-LED26T8-60P2S-840-D	60"	>80	26	4000K	R17d	3120	120	1560	312
<b>KT-LED26T8-60P2S-865-D</b>	<b>60"</b>	<b>&gt;80</b>	<b>26</b>	<b>6500K</b>	<b>R17d</b>	<b>3250</b>	<b>125</b>	<b>1625</b>	<b>325</b>
KT-LED28T8-64P2S-840-D	64"	>80	28	4000K	R17d	3310	118	1655	312
KT-LED28T8-64P2S-865-D	64"	>80	28	6500K	R17d	3450	123	1725	325
KT-LED31T8-72P2S-840-D	72"	>80	31	4000K	R17d	3840	124	1920	320
KT-LED31T8-72P2S-865-D	72"	>80	31	6500K	R17d	4000	129	2000	333
KT-LED37T8-84P2S-840-D	84"	>80	37	4000K	R17d	4510	122	2255	322
KT-LED37T8-84P2S-865-D	84"	>80	37	6500K	R17d	4700	127	2350	336
KT-LED42T8-96P2S-840-D	96"	>80	42	4000K	R17d	5100	121	2550	319
KT-LED42T8-96P2S-865-D	96"	>80	42	6500K	R17d	5300	126	2650	331
KT-LED47T8-108P2S-840-D	108"	>80	47	4000K	R17d	5580	119	2790	310
KT-LED47T8-108P2S-865-D	108"	>80	47	6500K	R17d	5800	123	2900	322
KT-LED52T8-120P2S-840-D	120"	>80	52	4000K	R17d	6150	118	3075	308
KT-LED52T8-120P2S-865-D	120"	>80	52	6500K	R17d	6400	123	3200	320

For a FREE SAMPLE, call 800-464-2680 or email SignHero@keystonetech.com.  
Some restrictions apply. Learn more about the 360° LED Sign Tube at: [keystonetech.com/SignHero](http://keystonetech.com/SignHero)

